

PRINOTH LLC Eastern US

264 NH Route 106
Gilmanton NH, USA 03237
Tel. 603.267.7840
prinoth.us@prinoth.com

PRINOTH LLC Far West US

2620 East 5th Street
Reno NV, USA 89512
Tel. 775.359.7517
prinoth.us@prinoth.com

PRINOTH LLC Rocky Mountains

2746 Seeber Drive Bldg B
Grand Junction CO, USA 81506
Tel. 970.242.7150
prinoth.us@prinoth.com

PRINOTH LLC Intermountain

2566 South Decker Lake Lane #3
West Valley UT, USA 84120
Tel. 801.364.8266
prinoth.us@prinoth.com

PRINOTH LTD Western Canada

285071 Frontier Road
Rockyview, AB, CANADA T1X 0R4
Tel. 403.279.7271
prinoth.canada@prinoth.com

PRINOTH LTD Eastern Canada

1001, J.-A. Bombardier Street
Granby, QC, CANADA J2J 1E9
Tel. 450.776.3600
prinoth.canada@prinoth.com

BISON
FEEL THE
DIFFERENCE





SCAN THIS QR CODE
TO SEE A VIDEO OF
THE BISON IN ACTION



POWER



AGILITY



COMFORT

PRECISION





FULL CONTROL



PRINOTH CONTROL UNIT

CUSTOM INTERFACE AT THE TOUCH OF A FINGER

The fully customizable PRINOTH CONTROL UNIT is convenient and practical. Each operator can tailor the user interface with their preferred shortcuts and configurations. This means that each time they take the sticks, their settings are saved. This makes the start-up process more streamlined so operators can hit the slopes sooner.

- The 12-inch tilting touchscreen makes everything easy to see at night or during the day.
- The flexible display of the rear view camera can be set as large or small at the top of the screen.
- Vital details about the machine such as the engine, tiller, winch, and quick access pages are always visible.

PRECISE CONTROL & COMFORTABLE OPERATION

An ergonomic joystick hand rest allows for hours of smooth, comfortable operation. The improved "joystick-in-joystick" design provides precise control and allows simultaneous blade movement making it easier for operators to push large piles and cut razor sharp edges. The latest generation of EATON's proven CAN-bus-controlled system optimizes the movements of the attachments and reduces the number of tubes. This results in customizable blade movements and easier maintenance and service on the machine.

• JOYSTICK IN JOYSTICK

• ADJUSTABLE JOYSTICK ORIENTATION

• COLOR CODING MAKES IT EASY TO LEARN FUNCTIONS

• WINCH FORCE CONTROL: AUTO / ECO / MANUAL

• SOLO VEHICLE: ONE MOVEMENT FROM FULL CONTACT PRESSURE TO FLOAT POSITION TO FULL TILLER COUNTERPRESSURE

• QUICK ACCESS PAGES: WINCH, ENGINE, VEHICLE SETTINGS, CABIN, FRONT TOOLS, REAR TOOLS, PARK FUNCTIONS

• FLEXIBLE CAMERA DISPLAY SETTING: SMALL OR LARGE

• PERSONALIZED USER PROFILE

• FULL MENU, VIRTUAL BUTTONS FOR MIRRORS, LIGHTS AND BELT TENSIONERS

• CUSTOMIZABLE TILES FOR PERSONAL PREFERENCES

• KEYPAD: FOCUS ON DIRECT ACCESS TO FUNCTIONS, CLEAR COCKPIT DESIGN

AUTOMATIC WINCH

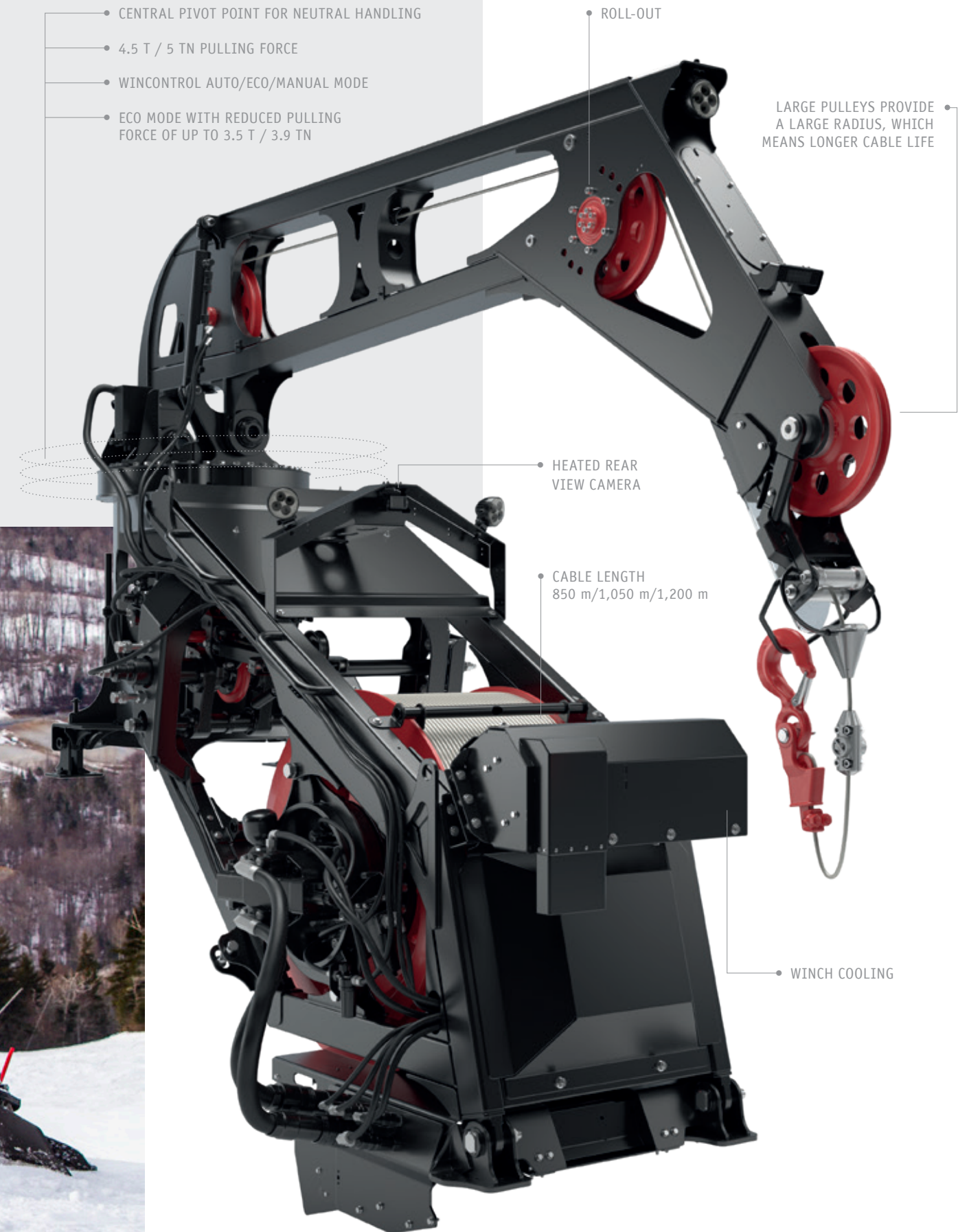
CONTROL & STABILITY

Extreme slopes are no problem for PRINOTH's AUTOMATIC winch, which is reliable in all conditions and throughout varied terrain. This allows the operator to focus on the blade and tiller. The winch pivot is located at the center of the groomer, ensuring neutral handling regardless of the pulling direction. The low center of gravity guarantees stability going uphill and downhill.

The winch can be operated in three modes (AUTO/ECO/MANUAL) with a maximum pulling force of up to 4.5 t. Each operator can prioritize pulling force or working speed, making winch operation easy and intuitive for seasoned winch operators and helps newer winch operators learn the skills more quickly.

RELIABLE & USER FRIENDLY

Less strain is put on the cable due to the large radius of the drum and pulleys, increasing the lifespan. The control unit displays the winch status, pulling force, and recommended turning direction. This information, along with the hydraulic winding system, enables smooth operation and reduced wear. The included Roll-Out System enables the operator to pull out the winch cable without as much physical exertion.



NEW SIDE WINGS ENSURE AN EVEN BETTER SLOPE FINISH



THE TILLING TEETH ARE ARRANGED FOR PERFECT RESULTS AND THEIR SHAPE ALLOWS FOR TILLING IN EITHER DIRECTION OF ROTATION

EVEN PRESSURE DISTRIBUTION ON THE FINISHER

SNOW CHAMBER: ADJUST SNOW TRANSPORT TO SUIT THE CONDITIONS AND CREATE THE IDEAL SLOPE FINISH



POWER TILLER

TILLING TECHNOLOGY FOR THE PERFECT SLOPE

Developed over 40 years ago, the PRINOTH POWER tiller produces deep, fine-grained grooves which means sensational slope quality that lasts. Specially arranged teeth completely transform the snowpack into an even layer. The POWER tiller is equipped for all conditions, and larger side wings adapt easily to the surface. To keep an eye on everything, the optional tiller camera is perfectly positioned to give the operator the best overview.



• CHOOSE FLOATING OR FIXED MODE
BASED ON SNOW CONDITIONS

• ROTOR SPEED SENSOR PROVIDES
LIVE AND PRECISE READINGS

• HYDRAULIC SIDE
WINGS PROVIDE
MAXIMUM FLEXIBILITY
DURING PREPARATION

• ADJUSTABLE SNOW
CHAMBER NOW
EQUIPPED WITH A
POSITIONING SENSOR

POSIFLEX TILLER

CREATE THE IDEAL CORDUROY FINISH

Used for decades in a wide range of North American snow conditions, the POSIFLEX tiller is known for helping operators deliver a perfect corduroy finish. Now available with an optional tiller camera, it's even easier to keep your eyes on the final product.

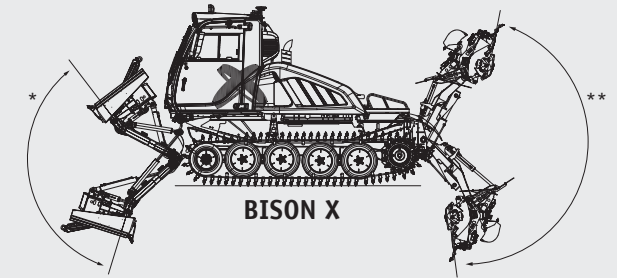
The adjustable snow chamber is equipped with a positioning sensor, allowing operators to precisely control the flow of the snow through the tiller. This increases the quality of the finish without having to waste energy by tilling deeper. Hydraulic side wings provide maximum flexibility during preparation and seamless transition between passes. Finisher mats made of durable rubber have individual sections with integrated weights and combs which are comprised of fewer parts, thereby reducing maintenance time and costs.

The tiller settings can be positioned in either floating or fixed mode depending on the snow and terrain conditions. An adjustable rotor speed sensor provides live and precise readings, this allows the operator to significantly improve grooming results while considering the vehicle's power requirements.



FIT FOR EVERY MISSION

Blades play an essential part in grooming perfect slopes and constructing unique park features. The joystick-in-joystick design allows for simultaneous blade movement and precise blade control. The shape of the blade has been developed to optimize the way snow rolls inside it. This reduces the force required to move the snow, while increasing the amount of snow being pushed. Blades are also equipped with fixation points making it easy to transport snow guns and other equipment. Get more work done, more quickly, with less hassle.



*More than twice the range of motion than the standard vehicle
**Extended tiller movement up to the vertical position

MASTER BLADE

This best-in-class blade can push enormous amounts of snow while producing precise slope edges, allowing for fewer passes. It extends beyond the tracks, making it easy to work close to obstacles. The precise angle of the blade teeth make breaking up ice and snow a breeze.

PARK BLADE

The widest blade available contains specially designed teeth that facilitate maximum pushing force and precision. It is ideal for getting close to structures and boundaries. The PARK blade also contains side wings and a vertically adjustable back-blading cutter at the rear for cutting jumps and landings more evenly and effectively, which results in less hand-work needed to finalize features.

CABIN COMFORT

MODERN, STYLISH, QUITE

It's all about the operator. The larger cabin, generous footwell with heating system, integrated sunroof, and ergonomic design (including the tailored Recaro seat) create a comfortable home base for producing the perfect product. Choose fully automated air conditioning for complete temperature control day or night.

UNIQUE SLIDING SEAT TECHNOLOGY

The center seat, upgraded joystick and larger 12" tilting touchscreen display allow the operator to be in full control. Choose the optional sideways-sliding swivel seat to move between center and left seating positions. The seat slides up to 500mm (1 foot 8 inches) and together with the 15° turning radius, provides the operator with the best possible view – a real advantage when building parks and pipes.



**CAT**

- ENGINE: CATERPILLAR C9.3B
- OUTPUT: 310 kW / 422 hp @ 1,800 rpm
- TORQUE: 1,897 Nm / 1,399 ft-lb @ 1,400 rpm
- HIGHLY EFFICIENT
- REDUCED EXHAUST FUMES



WORLD'S MOST EFFICIENT GROOMER

POWERFUL, SUSTAINABLE PERFORMANCE

Clean and powerful – the engines in PRINOTH snow groomers offer unrivaled performance and impressively low emissions. This machine meets with the highest emissions standards in the world: Euromot Stage V. The Caterpillar straight-six engine produces 422 hp/310 kW and an impressive maximum torque up to 1,900 Nm/1,400 ft-lb at an optimum engine speed of 1,400 rpm. This means you have ideal power performance within the recommended running rpm range. An exhaust treatment system with SCR catalytic converter and diesel particulate filter reduces emission to a minimum, which is good for your ski area today and in the future. These upgrades make the BISON the cleanest snow groomer in its class. Choose your fuel: diesel, HVO, GLT, and BTL can all be used, so your resort has the convenience to explore alternative fuel options, or stick with traditional diesel.



• OPEN STEEL TRACKS

• CLOSED STEEL TRACKS

• GAMSKETTE (ALUMINUM)

PRINOTH TRACKS

LIMITLESS POSSIBILITIES

Providing the best contact between the vehicle and snow layer. Whether new snow or powder, ice or asphalt, stony surfaces or glaciers – PRINOTH’s portfolio of high-grade tracks is guaranteed to meet every need.

STEEL TRACKS – HARD AS NAILS FOR THE TOUGHEST CONDITIONS

OPEN STEEL TRACKS: The most common track option, these are ideal for climbing, fresh and powder snow, and can be used on roads or fields. The overlapping lock simplifies handling and makes them easy to service.

CLOSED STEEL TRACKS: These tracks are ready to work in the toughest conditions. With their heavy duty durability they perform on surfaces that vary from glaciers to rocky ground. These are the most durable and easiest to service of all the track models.

GAMSKETTE (ALUMINUM) TRACKS – THE MANEUVERABLE, FLEXIBLE OPTION

With their excellent climbing abilities and maneuverability, these long-lasting tracks are made for all types of vehicles and feature overlapping locks, making them easy to use and service.

PRINOTH CONNECT

WE MAKE YOUR WORK LIFE EASIER

PRINOTH Connect is our commitment to improving everyday work life for people operating our machines and employed in ski resorts. We do this through technology that connects you with your colleagues and your vehicles. This enables up-to-date information on your equipment whenever and wherever you need it. The functions are accessed through the online resort management platform Skadii. Data is displayed via a single user interface in real time, and provides access to numerous reports. PRINOTH Connect can make your fleet’s vehicle operations easier to manage, more cost efficient, and more environmentally sustainable.

SNOW MEASUREMENT

One of the most important tools in a ski resort is a snow measurement system. Knowing the snow depth at all times improves the quality of your roads, terrain parks, and slopes—and good slopes mean happy customers.



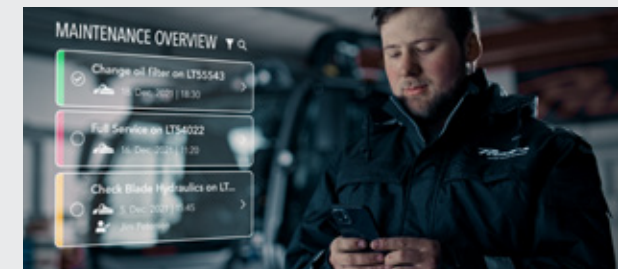
FLEET MANAGEMENT

Whether snow groomer, snowmobile or any other vehicle—know where they are and what they are doing at all times. With our Fleet Management system, we give you the big picture, which helps you optimize your operations.



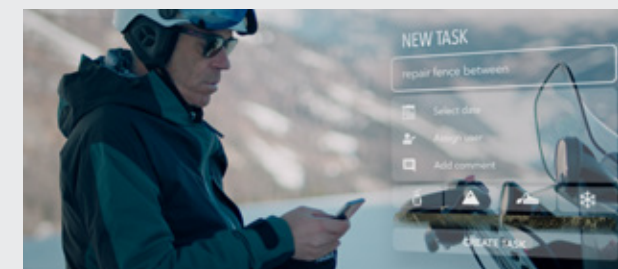
MAINTENANCE OVERVIEW

Whether it’s a single snow groomer or an entire fleet, Maintenance Overview allows easy and efficient management and organization of all maintenance and repairs saving time and money through optimized, standardized processes and documentation.



TASK MANAGER

With dozens, often hundreds of tasks a week to manage in a ski resort, current solutions are reaching their limits. Task Manager takes the work out of managing your tasks, keeping you up to date at all times and giving you peace of mind that your operations are running smoothly.



SCAN THIS QR CODE TO
LEARN MORE ABOUT
PRINOTH CONNECT

skadii
skadii.global



THE PERFECT PACKAGE: POWER & EFFICIENCY

Low emissions and fuel consumption coupled with low maintenance and operating costs – the BISON boasts unbeatable cleanliness, impressive efficiency and long service life.

BISON X – THE KING OF PARKS

Build the world's best parks with the BISON X. The X has an increased range of motion on the tiller and PARK blade, inclinometer for both vehicle and blade, and a sideways-sliding swivel seat. With the X, enjoy a distance meter, LED lights, premium sound system, and rear view camera. These enhancements help X operators design and prepare perfect park features in the tightest spots.

CROSS-COUNTRY

The BISON can be an excellent addition to any Nordic Center. For perfect classic tracks, attach a POWER tiller and NORDIC LINER, which guarantees cross country ski trails that meet Olympic standards. Two or four track plates and the tillers can be engaged individually to create pristine cross country trails and tracks.

ATTACHMENTS

PRINOTH groomers can be outfitted with a variety of attachments such as transport boxes, snow buckets, and front hydraulics to attach a snow blower or pipe cutter.

BISON WITH WINCH
AND POWER TILLER



BISON WITH
POSIFLEX TILLER





PRINOTH SERVICE

Expert support and technical assistance during inspections, repairs and maintenance work are all part of PRINOTH's customer service promise.

- Fast, flexible, reliable service
- Worldwide infrastructure backed by local service technicians who have the expertise and tools to fulfill your specific requirements to get your groomer fixed right here, right now.
- Available around the clock, including an emergency hotline. This allows you to get answers to questions, reducing critical downtime.



PRINOTH PARTS SHOP

Guaranteed OEM parts ensure long-term performance and reliability, and are available at the click of a button on the PRINOTH Parts Shop.

- Simple, quick and straightforward. Get the right parts, right now in the online shop with real-time availability and clear pricing.
- Certified OEM Parts – components are made, tested and proven specifically for your snow groomer.
- A full lineup of kits are available for your particular machine, which lets your mechanics spend more time working and less time searching.

parts-shop.prinoth.com



SCAN THIS QR CODE TO VISIT PRINOTH PARTS SHOP



CHOOSE THE RIGHT PARTNER FOR GROOMING, PARTS AND SERVICE

For over 60 years, PRINOTH has set the standards not only on the slopes, but also for parts and service. Our Customer Service team is all about innovation, quality, professionalism, and above all – we care! Our coordinators and technicians are here for you. Have a question? We have the answer.

PRINOTH ACADEMY

Knowledge and skills are the foundations for creating perfectly groomed slopes, parks and trails. Training programs for both technicians and operators are available that focus on theory and hands-on practice.

- The three progressive level system BASIC, ADVANCED and EXPERT takes participants step by step through the training material. Graduates receive an official certificate upon completion.
- eLearning provides flexibility to learn where and when it is convenient.
- In-person training available at regional offices, or have a course customized for your resort.

prinoth.com/academy



SCAN THIS QR CODE TO LEARN MORE ABOUT PRINOTH ACADEMY



TECHNICAL SPECIFICATIONS

*According to the norms ASTM D975, EN590, EN15940 // **with additional 55 l | 12 gal tank

DIMENSIONS AND WEIGHT

Total vehicle length	4,630 mm 15'2"
Total length: vehicle with attachments	
POWER tiller	8,880 mm 29'2"
POSIFLEX tiller	8,960 mm 29'5"
Total height with tracks (without winch)	2,900 mm 9'6"
Track working width	4,210 / 4,260 mm 13'10" / 14'
Transport dimensions (length/width/height)	7,020 / 2,535 / 2,770 mm 23' / 8'4" / 9'1"
Clearing blade with side wing open (Standard)	5,360 mm 17'7"
Clearing blade with side wing closed (Standard)	4,510 mm 14'10"
Clearing blade with side wing open (Park)	5,674 mm 18'7"
Clearing blade with side wing closed (Park)	4,625 mm 15'2"
POWER tiller with raised side wings	5,400 mm 17'9"
POWER tiller with lowered side wings	6,085 mm 20'
POSIFLEX tiller with raised side wings	5,365 mm 17'7"
POSIFLEX tiller with lowered side wings	6045 mm 19'10"
Weight with tracks, blade and tiller	from 9,712 kg 21,411 lbs
Weight winch (850 m cable)	from 2,096 kg 4,621 lbs

DRIVING SPECIFICATIONS

Maximum speed	21 km/h 13 mph
Turning radius	0 (around its own axis)

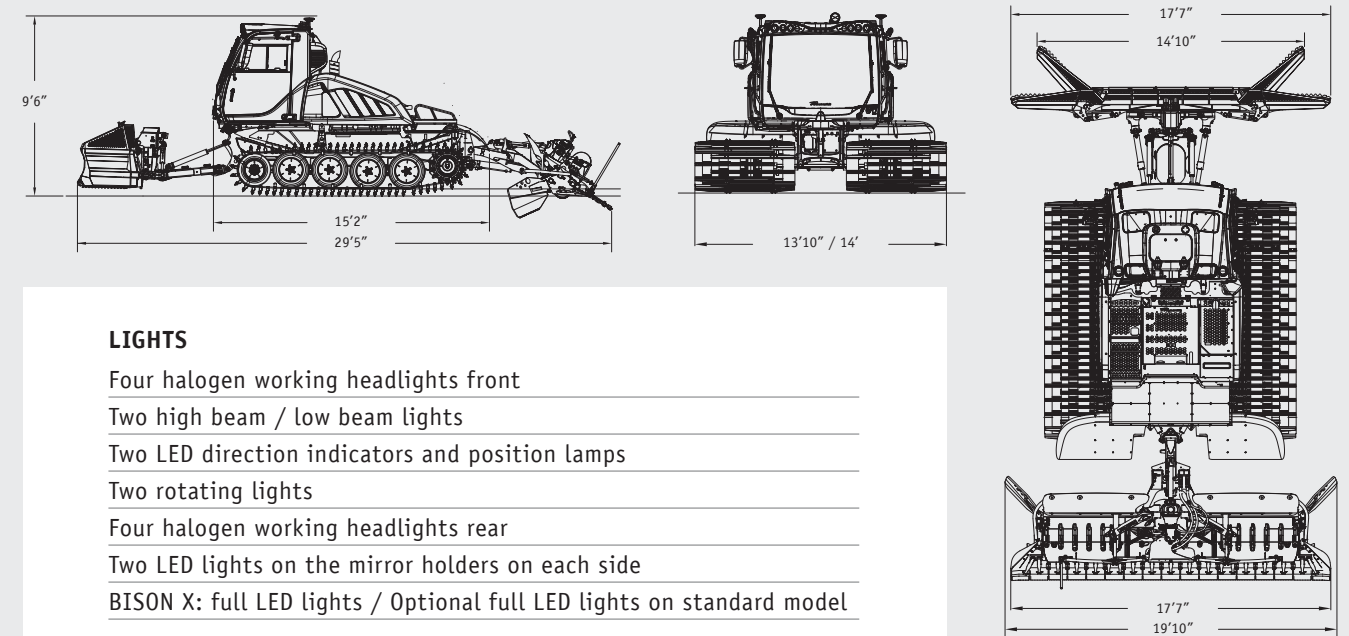
ENGINE

Model	Caterpillar C93.B
Emission standard	Euromot Stage V / EPA Tier 4 final
Fuel types	Diesel, HVO, GTL and BTL*
Power output (ECE)	310 kW / 422 hp ECE @ 1,800 rpm
Torque	1,897 Nm @ 1,400 rpm 1,399 ft-lb @ 1,400 rpm
Capacity	9,300 cm ³
Cylinder configuration	straight-6
Tank capacity diesel	320 l**/265 l 84.5 gal**/70 gal
Tank capacity AdBlue®	30 l 8 gal

AUTOMATIC WINCH

Maximum pulling force	44.1 kN / 4.5 t / 5 t short
Maximum cable length	up to 1,200 m up to 1,312 yd
Cable diameter	11 mm
Cable breaking load	150 kN
AUTOMATIC winch	selectable modes AUTO / ECO / MANUAL

BISON



LIGHTS

- Four halogen working headlights front
- Two high beam / low beam lights
- Two LED direction indicators and position lamps
- Two rotating lights
- Four halogen working headlights rear
- Two LED lights on the mirror holders on each side
- BISON X: full LED lights / Optional full LED lights on standard model

OPERATOR CABIN

- Operator seat: RECARO comfort center seat with pneumatic suspension, height adjustable
- Passenger seat on left, storage box right with compartment for radio set
- PRINOTH Control Unit: new 12" touch display, new armrest with multifunctional joystick, steering lever, multimedia box with digital radio, MP3/WMA, Bluetooth, AUX-In, USB, Bluetooth hands-free system
- Heated side mirrors, heated front, rear and side windows
- Automatic heating and ventilation with touchscreen control, footwell heating system
- Electro-hydraulic tilting cab
- ROPS tested pursuant to EN 15059

PARK FUNCTIONS

- Inclinometer for vehicle and blade
- Distance meter, LED lights, premium sound, rear view camera
- Increased range of motion of blade and tiller for constructing parks
- PARK blade with side cutters

STANDARD FUNCTIONS

- Hydraulic track tensioning
- Cruise control
- On-board diagnostics
- Personalized operator settings saved to memory
- Reversing alarm
- Automatic heating system
- Engine preheating
- Loading platform (standard vehicles)
- Blade floating position

OPTIONS

- Automatic seatbelt tensioning system
- Additional front alarm

Fleet management

- Snow depth measurement
- Front hydraulics
- Branch protection
- PRINOTH carpet
- Shaping tool
- Instructor seat on the storage box right
- Filled with bio-oil ex works
- Rear view camera on solo vehicle
- Snow chamber on the POWER tiller
- Tiller camera with LED lighting
- Air conditioning system
- Towing hook
- Sliding-Seat