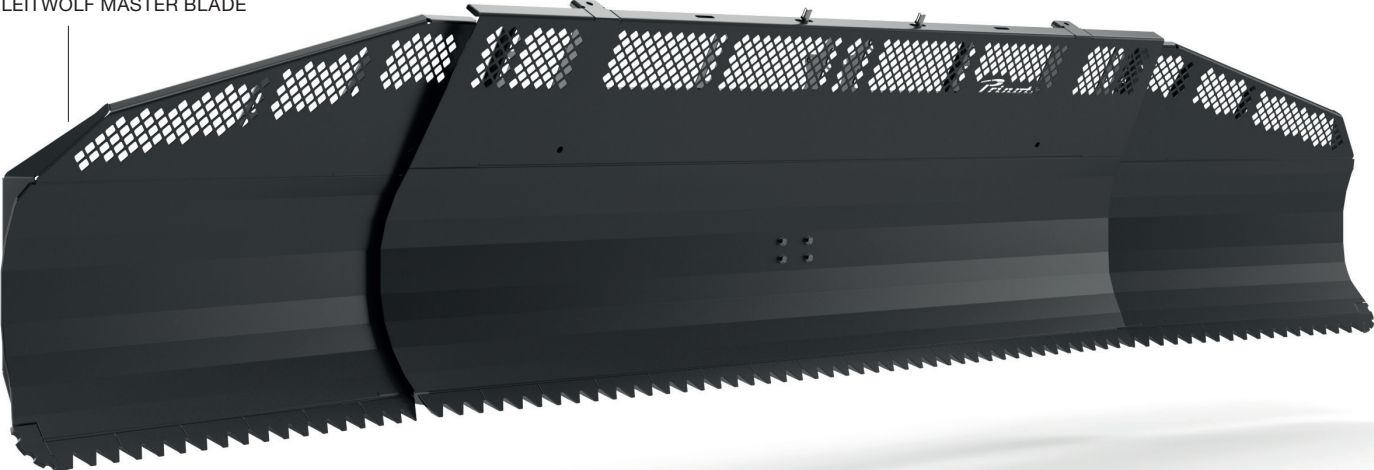


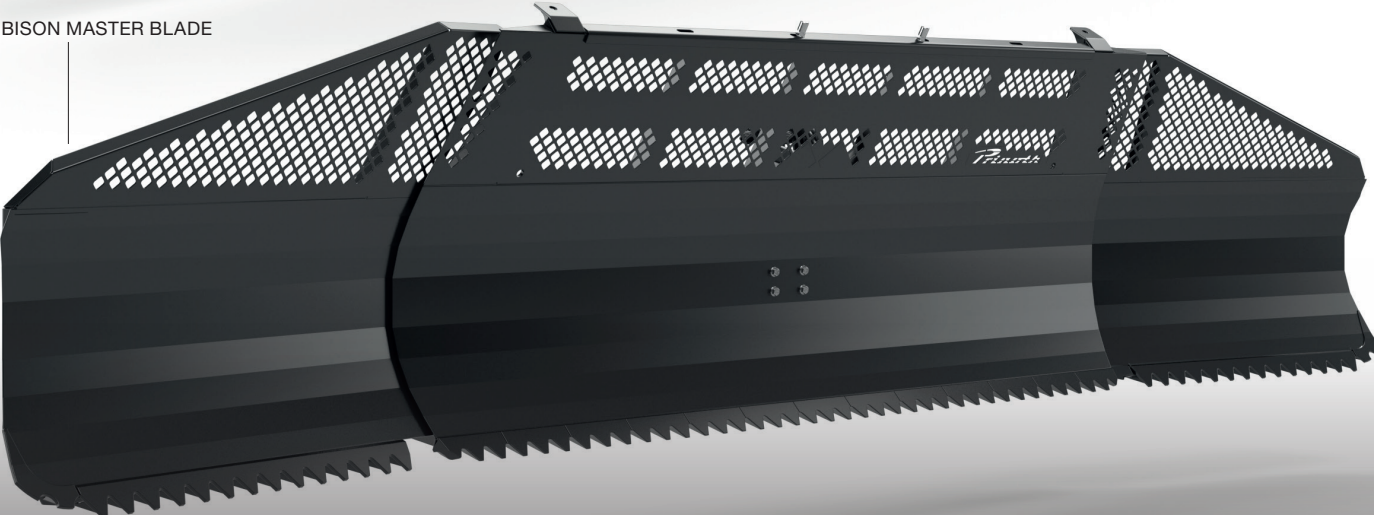
MASTER BLADE

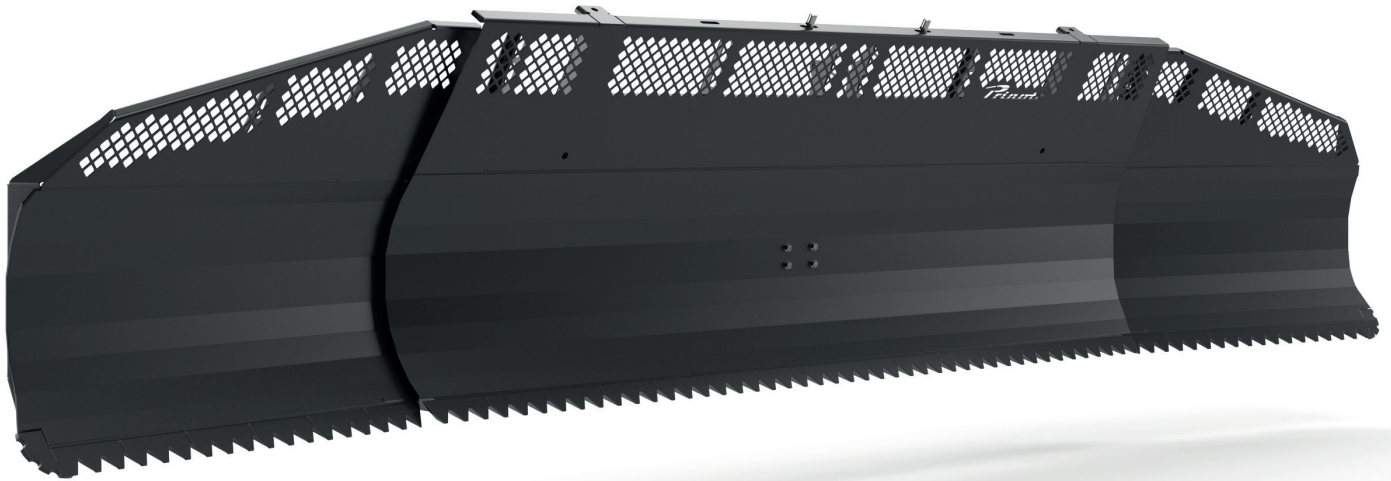
YOUR ALPINE BLADE

LEITWOLF MASTER BLADE



BISON MASTER BLADE





MASTER BLADE YOUR ALPINE BLADE

Push massive amounts of snow with the Master Blade to make your daily work of preparing perfect slopes efficient. The blade radius encourages the snow to roll inside the blade reducing spillover. Transporting tools and equipment is easy thanks to the reinforced snow screen and the built-in transport pins.

MADE TO PROCESS SNOW

The following features make the Master Blade the best blade on the market for grooming alpine slopes:

Ideal blade width for your vehicle

- Perfectly adapted to each working width
- 12-way blade for maximum flexibility

Balanced blade radius and blade wing cutting edge

- Rolls the snow smoothly
- Shapes precise slope edges

Forged teeth

- Rip through hard snow and ice effectively
- Highly wear resistant

FOR EASY EQUIPMENT TRANSPORTATION

The Master Blade makes equipment transportation safe and simple with these features:

Reinforced upper snow screen and transport pins

- Provide extra stability to transport snow guns and other equipment
- Easy to attach optional front implements such as transport forks, boxes and loading buckets

Towing hook (optional)

- Pulls loads up to 2,000 kg/4,400 lbs.

COMPATIBLE VEHICLES

BISON & BISON X (GENERATION BO, BS)

LEITWOLF & LEITWOLF X (GENERATION LT, LIT, LI, LE)

TECHNISCHE DATEN

Blade width with blade wings closed

Bison	4,485 mm 14'9"
Leitwolf 4.3	4,685 mm 15'4"
Leitwolf 4.5	5,040 mm 16'6"

Blade width with blade wings open

Bison	5,375 mm 17'8"
Leitwolf 4.3	5,680 mm 18'8"
Leitwolf 4.5	5,950 mm 19'6"